



OLD HICKORY

BUILDINGS

A Tradition of Quality
SINCE 1997



BUY OR RENT TO OWN



OLDHICKORYBUILDINGS.COM



IT'S NOT JUST ANY OLD BUILDING... IT'S AN
OLD HICKORY BUILDING



DEPENDABLE LONGEVITY

SINCE 1997

With over 700 locations in North America, a huge variety of buildings and options to choose from, and an inventory of over 10,000 buildings in stock and ready to deliver, you're sure to get the building you need, when you need it.



EXCEEDING OUR CUSTOMER'S EXPECTATIONS

Using the old fashioned, country tradition of barn building, we at Old Hickory Buildings create quality storage buildings for many happy customers throughout North America. Our factories use the same traditional construction techniques and philosophies handed down from generation to generation among the many Amish and Mennonite communities. In fact, the kind of quality, care and attention to detail that we put into each and every one of our barns is how we became leaders in our industry. Our overriding philosophy of quality can be seen in our company's culture every day. From the premium materials we use to the engineer certification process, and from our highly skilled and customer friendly delivery drivers to our knowledgeable salespeople, you can be confident that you'll get the best building for your needs at a price within your budget.



A TRADITION OF QUALITY

Old Hickory Buildings is a leader you can trust in the portable storage industry. For over 20 years, we have succeeded by providing our customers with dependable storage solutions and a quality buying experience.



OLDHICKORYBUILDINGS.COM

LOFTED BARN PRICING
TREATED & PAINTED (ONE COLOR)

| SIZE | CASH PRICE* | RENT TO OWN (36 MO) | RENT TO OWN (48 MO)** |
|---------|-------------|---------------------|-----------------------|
| 8x10 | \$2,195 | \$101 ⁶² | \$91 ⁴⁶ |
| 8x12 | \$2,345 | \$108 ⁵⁶ | \$97 ⁷¹ |
| 8x16 | \$2,675 | \$123 ⁸⁴ | \$111 ⁴⁶ |
| 10x10 | \$2,595 | \$120 ¹⁴ | \$108 ¹³ |
| 10x12 | \$2,825 | \$130 ⁷⁹ | \$117 ⁷¹ |
| 10x14 | \$3,125 | \$144 ⁶⁸ | \$130 ²¹ |
| 10x16 | \$3,295 | \$152 ⁵⁵ | \$137 ²⁹ |
| 10x20 | \$3,995 | \$184 ⁹⁵ | \$166 ⁴⁶ |
| 12x16 | \$4,095 | \$189 ⁵⁸ | \$170 ⁶³ |
| 12x20 | \$4,575 | \$211 ⁸¹ | \$190 ⁶³ |
| 12x24 | \$5,495 | \$254 ⁴⁰ | \$228 ⁹⁶ |
| 12x28 | \$6,275 | \$290 ⁵¹ | \$261 ⁴⁶ |
| 12x30 | \$6,625 | \$306 ⁷¹ | \$276 ⁰⁴ |
| 12x32 | \$6,725 | \$311 ³⁴ | \$280 ²¹ |
| 12x36 | \$7,345 | \$340 ⁰⁵ | \$306 ⁰⁴ |
| 12x40 | \$7,825 | \$362 ²⁷ | \$326 ⁰⁴ |
| 14x24 | \$7,095 | \$328 ⁴⁷ | \$295 ⁶³ |
| 14x28 | \$8,075 | \$373 ⁸⁴ | \$336 ⁴⁶ |
| 14x32 | \$9,075 | \$420 ¹⁴ | \$378 ¹³ |
| 14x36 | \$9,795 | \$453 ⁴⁷ | \$408 ¹³ |
| 14x40 | \$10,395 | \$481 ²⁵ | \$433 ¹³ |
| ➤ 16x24 | \$8,495 | \$393 ²⁹ | \$353 ⁹⁶ |
| ➤ 16x28 | \$9,675 | \$447 ⁹² | \$403 ¹³ |
| ➤ 16x32 | \$10,875 | \$503 ⁴⁷ | \$453 ¹³ |
| ➤ 16x36 | \$11,745 | \$543 ⁷⁵ | \$489 ³⁸ |
| ➤ 16x40 | \$12,475 | \$577 ⁵⁵ | \$519 ⁷⁹ |

• Up to 16 ft of loft included in price, depending on size. Additional charges apply if over 16 ft. No discount for subtracting loft.

• 6'3" INSIDE WALL HEIGHT STANDARD

LOFTED BARN



UTILITY SHED



• 6'3" INSIDE WALL HEIGHT STANDARD
• OPTIONAL 7' TALL WALLS (81"INSIDE) AVAILABLE
• OPTIONAL 8' TALL WALLS (92"INSIDE) AVAILABLE

UTILITY SHED PRICING
TREATED & PAINTED (ONE COLOR)
6' WALLS

| SIZE | CASH PRICE* | RENT TO OWN (36 MO) | RENT TO OWN (48 MO)** |
|---------|-------------|---------------------|-----------------------|
| 8x8 | \$1,725 | \$79 ⁸⁶ | \$71 ⁸⁸ |
| 8x10 | \$1,845 | \$85 ⁴² | \$76 ⁸⁸ |
| 8x12 | \$1,945 | \$90 ⁰⁵ | \$81 ⁰⁴ |
| 8x16 | \$2,575 | \$119 ²¹ | \$107 ²⁹ |
| 10x10 | \$2,345 | \$108 ⁵⁶ | \$97 ⁷¹ |
| 10x12 | \$2,475 | \$114 ⁵⁸ | \$103 ¹³ |
| 10x14 | \$2,825 | \$130 ⁷⁹ | \$117 ⁷¹ |
| 10x16 | \$2,945 | \$136 ³⁴ | \$122 ⁷¹ |
| 10x20 | \$3,645 | \$168 ⁷⁵ | \$151 ⁸⁸ |
| 12x16 | \$3,645 | \$168 ⁷⁵ | \$151 ⁸⁸ |
| 12x20 | \$4,175 | \$193 ²⁹ | \$173 ⁹⁶ |
| 12x24 | \$4,775 | \$221 ⁰⁶ | \$198 ⁹⁶ |
| 12x28 | \$5,545 | \$256 ⁷¹ | \$231 ⁰⁴ |
| 12x30 | \$5,875 | \$271 ⁹⁹ | \$244 ⁷⁹ |
| 12x32 | \$6,175 | \$285 ⁸⁸ | \$257 ²⁹ |
| 12x36 | \$6,695 | \$309 ⁹⁵ | \$278 ⁹⁶ |
| 12x40 | \$7,095 | \$328 ⁴⁷ | \$295 ⁶³ |
| 14x24 | \$6,525 | \$302 ⁰⁸ | \$271 ⁸⁸ |
| 14x28 | \$7,295 | \$337 ⁷³ | \$303 ⁹⁶ |
| 14x32 | \$8,325 | \$385 ⁴² | \$346 ⁸⁸ |
| 14x36 | \$9,295 | \$430 ³² | \$387 ²⁹ |
| 14x40 | \$10,025 | \$464 ¹² | \$417 ⁷¹ |
| ➤ 16x24 | \$7,825 | \$362 ²⁷ | \$326 ⁰⁴ |
| ➤ 16x28 | \$8,745 | \$404 ⁸⁶ | \$364 ³⁸ |
| ➤ 16x32 | \$9,995 | \$462 ⁷³ | \$416 ⁴⁶ |
| ➤ 16x36 | \$11,145 | \$515 ⁹⁷ | \$464 ³⁸ |
| ➤ 16x40 | \$12,025 | \$556 ⁷¹ | \$501 ⁰⁴ |

BARN PRICING
TREATED & PAINTED (ONE COLOR)

| SIZE | CASH PRICE* | RENT TO OWN (36 MO) | RENT TO OWN (48 MO)** |
|-------|-------------|---------------------|-----------------------|
| 8x8 | \$1,625 | \$75 ²³ | \$67 ⁷¹ |
| 8x10 | \$1,725 | \$79 ⁸⁶ | \$71 ⁸⁸ |
| 8x12 | \$1,845 | \$85 ⁴² | \$76 ⁸⁸ |
| 8x16 | \$2,345 | \$108 ⁵⁶ | \$97 ⁷¹ |
| 10x10 | \$2,095 | \$96 ⁹⁹ | \$87 ²⁹ |
| 10x12 | \$2,195 | \$101 ⁶² | \$91 ⁴⁶ |
| 10x14 | \$2,525 | \$116 ⁹⁰ | \$105 ²¹ |
| 10x16 | \$2,625 | \$121 ⁵³ | \$109 ³⁸ |
| 10x20 | \$3,195 | \$147 ⁹² | \$133 ¹³ |
| 12x16 | \$3,445 | \$159 ⁴⁹ | \$143 ⁵⁴ |
| 12x20 | \$3,995 | \$184 ⁹⁵ | \$166 ⁴⁶ |
| 12x24 | \$4,675 | \$216 ⁴⁴ | \$194 ⁷⁹ |

• 4' INSIDE WALL HEIGHT

BARN



ECONOMY



ECONOMY PRICING
TREATED & PAINTED (ONE COLOR)

| SIZE | CASH PRICE* | RENT TO OWN (36 MO) | RENT TO OWN (48 MO)** |
|-------|-------------|---------------------|-----------------------|
| 8x8 | \$1,525 | \$70 ⁶⁰ | \$63 ⁵⁴ |
| 8x12 | \$1,745 | \$80 ⁷⁹ | \$72 ⁷¹ |
| 10x12 | \$2,095 | \$96 ⁹⁹ | \$87 ²⁹ |

• The above prices are for the Economy Barn and the Economy Utility.
• Supplies limited on Economy Buildings.
• Lead times for custom orders vary.
• Economy Utility Sheds come with 6' walls ONLY.
• NON-CERTIFIED ONLY.
• Economy Buildings are sold as is – no warranty.

- See pages 9-12 for siding, colors & building options.
- All 8' wide buildings come with a single door (excluding packages).
- All 10', 12', 14' & 16' wide buildings come with double doors (excluding packages).

*Prices shown include 3% discount offered for purchases made with cash or check. Credit card purchases are not eligible for the discounted price and will be priced 3% higher.
One color paint/water sealer included in above price. Urethane and additional colors are extra.

12' wide and over buildings are measured across the eaves due to DOT regulations (all others are measured from outside corners).
➤ 16' wide buildings not available in all areas. See dealer for details.
**Not available at all locations. See dealer for details.

PLAYHOUSE

- **BUILDING MUST INCLUDE A PORCH TO GET PACKAGE PRICE**
- **ADD PACKAGE PRICE TO SAME SIZE UTILITY SHED OR LOFTED BARN**

Includes 9 lite window door, 4 ft. porch*, two posts, and three 2x3 windows. The Utility Style Playhouse Package will include 8 ft. walls. Package price does not include wooden barn doors.

*Total length of building includes 4ft porch.

\$695

ADDS \$32¹⁸ TO 36 MONTH RENT
ADDS \$28⁹⁶ TO 48 MONTH RENT*



T1-11 PRESSURE TREATED SIDING

BUCKSKIN PAINT & BARN WHITE TRIM PAINT ON LP DUTCH LAP SIDING



PINNACLE RED PAINT & BARN WHITE TRIM PAINT ON LP SMART PANEL SIDING

T1-11 PRESSURE TREATED SIDING

DELUXE PLAYHOUSE

- **BUILDING MUST INCLUDE A PORCH TO GET PACKAGE PRICE**
- **ADD PACKAGE PRICE TO SAME SIZE UTILITY SHED OR LOFTED BARN**

Includes 9 lite window door, porch, porch railing (Included porch railing is 3 sections that are approx. 4ft each.), four posts, and five 2x3 windows. The Utility Style Deluxe Playhouse Package will also include 8ft walls. Minimum size is 12x24. Package price does not include wooden barn doors.

*Total length of building includes 4ft porch.

\$1,275

ADDS \$59⁰³ TO 36 MONTH RENT
ADDS \$53¹³ TO 48 MONTH RENT*



T1-11 PRESSURE TREATED SIDING

MAHOGANY URETHANE & BARN WHITE TRIM PAINT ON LP SMART PANEL SIDING

SIDE PORCH

- **BUILDING MUST INCLUDE A PORCH TO GET PACKAGE PRICE**
- **ADD PACKAGE PRICE TO SAME SIZE UTILITY SHED OR LOFTED BARN**

Includes 9 lite window door, porch, porch railing (included porch railing is approx. 4 ft.), one post, two 2x3 windows and double barn doors. The Utility Style Side Porch Package will also include 8 ft. walls.

*Total length of building includes 4ft porch.

\$795

ADDS \$36⁸¹ TO 36 MONTH RENT
ADDS \$33¹³ TO 48 MONTH RENT*

UTILITY DORMER

- **ADD PACKAGE PRICE TO SAME SIZE UTILITY SHED**

Includes three 10" x 29" windows in dormer and 81" inside wall height. Only available on 8', 10' & 12' wide buildings. This is a package deal, options may be removed but no credit given on price. More than one dormer can be added to building if size permits. Add \$695 for each additional dormer.

Package shown with extra options including two 2x3 windows with shutters, two 10"x29" windows in doors and different color shutter trim and doors.

\$895

ADDS \$41⁴⁴ TO 36 MONTH RENT
ADDS \$37²⁹ TO 48 MONTH RENT*



GAP GRAY PAINT, NAVAJO TRIM PAINT & DRIFTWOOD URETHANE ON SHUTTERS & DOORS ON LP SMART PANEL SIDING

GARAGE

- **BUILDING MUST INCLUDE A GARAGE DOOR AND HOUSE-STYLE DOOR TO QUALIFY FOR PACKAGE PRICE**
- **ADD PACKAGE PRICE TO SAME SIZE UTILITY SHED OR LOFTED BARN**

Includes garage door, solid house-style door, one 2x3 window and 12" on center floor joists. The Utility Style Garage Package will also include 8 ft. walls. Package price does not include wooden barn doors.

\$795

ADDS \$36⁸¹ TO 36 MONTH RENT
ADDS \$33¹³ TO 48 MONTH RENT*



SCARLET RED PAINT & BARN WHITE TRIM PAINT ON LP SMART PANEL SIDING

T1-11 PRESSURE TREATED SIDING



SCARLET RED PAINT, BARN WHITE TRIM PAINT & BLACK PAINTED SHUTTERS ON LP SMART PANEL SIDING SHOWN WITH 6" FRONT & BACK ROOF OVERHANG



CHESTNUT BROWN URETHANE WITH GAP GRAY TRIM PAINT ON LP DUTCH LAP SIDING

*Not available at all locations. See dealer for details.

*Not available at all locations. See dealer for details.

ANIMAL SHELTER

FEATURES

- 4x6 Pressure Treated perimeter base.
- 1 1/4" Pressure Treated Kick Boards approximately 4' high, spaced 1.5" apart
- 8' wide opening is standard. Up to 10' wide openings available. See dealer for special pricing on custom width frameouts.
- Standard one stall per 20 feet of length or less (not counting tack room), unless specifically ordered differently.
For example a 12x12 would have one stall standard, a 12x20 would have one stall standard, a 12x24 would come with 2 stalls standard – all examples are without tack room.
- Additional stalls (includes opening and divider) can be added for \$350 per stall (optional).

TACK ROOM

- \$95/foot of length (minimum of 4'). (Tack Room starts on an outside end wall. Add \$350 to start on an inside divider wall.)
- Pressure Treated or T&G flooring depending on area & availability.
- OSB divider wall between tack room & stall.
- 3' Wooden Barn door on all tack rooms. Upgrade to 4' wooden barn door for \$20 (where applicable).

Buildings will be set directly on ground with no blocking. Ground must be suitable for application prior to delivery.

ANIMAL SHELTER PRICING TREATED & PAINTED (ONE COLOR)

| SIZE | CASH PRICE* | RENT TO OWN (36 MO) | RENT TO OWN (48 MO)** |
|---------|-------------|---------------------|-----------------------|
| 8x12 | \$2,070 | \$95 ⁸³ | \$86 ²⁵ |
| 8x16 | \$2,700 | \$125 ⁰⁰ | \$112 ⁵⁰ |
| 10x10 | \$2,470 | \$114 ³⁵ | \$102 ⁹² |
| 10x12 | \$2,600 | \$120 ³⁷ | \$108 ³³ |
| 10x14 | \$2,950 | \$136 ⁵⁷ | \$122 ⁹² |
| 10x16 | \$3,070 | \$142 ¹³ | \$127 ⁹² |
| 10x20 | \$3,770 | \$174 ⁵⁴ | \$157 ⁰⁸ |
| 12x16 | \$3,770 | \$174 ⁵⁴ | \$157 ⁰⁸ |
| 12x20 | \$4,300 | \$199 ⁰⁷ | \$179 ¹⁷ |
| 12x24 | \$4,900 | \$226 ⁸⁵ | \$204 ¹⁷ |
| 12x28 | \$5,670 | \$262 ⁵⁰ | \$236 ²⁵ |
| 12x30 | \$6,000 | \$277 ⁷⁸ | \$250 ⁰⁰ |
| 12x32 | \$6,300 | \$291 ⁶⁷ | \$262 ⁵⁰ |
| 12x36 | \$6,820 | \$315 ⁷⁴ | \$284 ¹⁷ |
| 12x40 | \$7,220 | \$334 ²⁶ | \$300 ⁸³ |
| 14x24 | \$6,650 | \$307 ⁸⁷ | \$277 ⁰⁸ |
| 14x28 | \$7,420 | \$343 ⁵² | \$309 ¹⁷ |
| 14x32 | \$8,450 | \$391 ²⁰ | \$352 ⁰⁸ |
| 14x36 | \$9,420 | \$436 ¹¹ | \$392 ⁵⁰ |
| 14x40 | \$10,150 | \$469 ⁹¹ | \$422 ⁹² |
| ► 16x24 | \$7,950 | \$368 ⁰⁶ | \$331 ²⁵ |
| ► 16x28 | \$8,870 | \$410 ⁶⁵ | \$369 ⁵⁸ |
| ► 16x32 | \$10,120 | \$468 ⁵² | \$421 ⁶⁷ |
| ► 16x36 | \$11,270 | \$521 ⁷⁶ | \$469 ⁵⁸ |
| ► 16x40 | \$12,150 | \$562 ⁵⁰ | \$506 ²⁵ |



ANIMAL SHELTER

Shown with additional stall. See features for details.



ANIMAL SHELTER & TACK ROOM

Shown with 4' door. 10" x 35" window in door is extra & not included in package price. See page 12 for option pricing.

ANIMAL SHELTER SECURITY DEPOSITS

\$200
on 8' & 10' wide buildings

\$400
on 12' wide buildings

\$1,000
on 14' wide buildings

\$2,000
on 16' wide buildings

THE CABANA



CABANA SECURITY DEPOSITS

\$200 on 8' & 10' wide buildings

\$400 on 12' wide buildings

CABANA PRICING TREATED

| SIZE | CASH PRICE* | RENT TO OWN (36 MO) | RENT TO OWN (48 MO)** |
|-------|-------------|---------------------|-----------------------|
| 10x12 | \$3,045 | \$140 ⁹⁷ | \$126 ⁸⁸ |
| 10x16 | \$3,925 | \$181 ⁷¹ | \$163 ⁵⁴ |
| 10x20 | \$4,875 | \$225 ⁶⁹ | \$203 ¹³ |
| 12x16 | \$4,695 | \$217 ³⁶ | \$195 ⁶³ |
| 12x20 | \$5,795 | \$268 ²⁹ | \$241 ⁴⁶ |
| 12x24 | \$6,975 | \$322 ⁹² | \$290 ⁶³ |

12' wide and over buildings are measured across the eaves due to DOT regulations (all others are measured from outside corners). | *Prices shown include 3% discount offered for purchases made with cash or check. Credit card purchases are not eligible for the discounted price and will be priced 3% higher. | ►16' wide buildings not available in all areas. See dealer for details. | **Not available at all locations. See dealer for details. One color paint/water sealer included in above price. Urethane and additional colors are extra.

METAL SHED



- SPACIOUS 6'7" TALL WALLS STANDARD ON METAL SHED & METAL LOFTED
- 36" OC STUDS/TRUSSES ARE STANDARD

METAL SHED PRICING

| SIZE | CASH PRICE* | RENT TO OWN (36 MO) | RENT TO OWN (48 MO)** |
|-------|-------------|---------------------|-----------------------|
| 10x10 | \$1,945 | \$90 ⁰⁵ | \$81 ⁰⁴ |
| 10x12 | \$2,145 | \$99 ³¹ | \$89 ³⁸ |
| 10x16 | \$2,475 | \$114 ⁵⁸ | \$103 ¹³ |
| 10x20 | \$2,875 | \$133 ¹⁰ | \$119 ⁷⁹ |
| 12x16 | \$3,075 | \$142 ³⁶ | \$128 ¹³ |
| 12x20 | \$3,445 | \$159 ⁴⁹ | \$143 ⁵⁴ |
| 12x24 | \$3,895 | \$180 ³² | \$162 ²⁹ |
| 12x28 | \$4,375 | \$202 ⁵⁵ | \$182 ²⁹ |
| 12x32 | \$4,825 | \$223 ³⁸ | \$201 ⁰⁴ |

METAL LOFTED



METAL LOFTED PRICING

| SIZE | CASH PRICE* | RENT TO OWN (36 MO) | RENT TO OWN (48 MO)** |
|-------|-------------|---------------------|-----------------------|
| 8x10 | \$2,045 | \$94 ⁶⁸ | \$85 ²¹ |
| 8x12 | \$2,145 | \$99 ³¹ | \$89 ³⁸ |
| 8x16 | \$2,375 | \$109 ⁹⁵ | \$98 ⁹⁶ |
| 10x10 | \$2,475 | \$114 ⁵⁸ | \$103 ¹³ |
| 10x12 | \$2,595 | \$120 ¹⁴ | \$108 ¹³ |
| 10x16 | \$3,075 | \$142 ³⁶ | \$128 ¹³ |
| 10x20 | \$3,445 | \$159 ⁴⁹ | \$143 ⁵⁴ |
| 12x16 | \$3,675 | \$170 ¹⁴ | \$153 ¹³ |
| 12x20 | \$4,145 | \$191 ⁹⁰ | \$172 ⁷¹ |
| 12x24 | \$4,625 | \$214 ¹² | \$192 ⁷¹ |
| 12x28 | \$5,075 | \$234 ⁹⁵ | \$211 ⁴⁶ |
| 12x32 | \$5,575 | \$258 ¹⁰ | \$232 ²⁹ |

CHOOSE ANY METAL COLOR(S) FROM PAGE 9 FOR ROOF, SIDING & TRIM.
(STANDARD OR SPECIAL ORDER METAL COLORS INCLUDED IN PRICE.)

METAL BUILDING OPTIONS

| | |
|---|---------------|
| 2' x 3' WINDOW (CENTER OF BACK WALL ONLY) | \$75 |
| 3' x 3' WINDOW (CENTER OF BACK WALL ONLY) | \$85 |
| SHELVES (3 TIER, PRICED PER FOOT OF WIDTH) | \$10/ft |
| WORKBENCH (PRICED PER FOOT OF WIDTH) | \$12/ft |
| GARAGE DOOR (12' WIDE LOFTED BARNs ONLY) (12" ON CENTER FLOOR JOISTS INCLUDED) | \$525 |
| 3/4" FLOORING | \$.40 /sq ft |
| 12" ON CENTER FLOOR JOISTS | \$.30 /sq ft |
| CERTIFIED MODELS | Additional 5% |
| NO OPTIONS ON SIDE WALL OF METAL BUILDINGS | |



METAL
LOFTED
GARAGE
12' WIDE



METAL PROVIDED BY:



WWW.METALMAX.COM

*Prices shown include 3% discount offered for purchases made with cash or check. Credit card purchases are not eligible for the discounted price and will be priced 3% higher. | **Not available at all locations. See dealer for details.

METAL COLORS | ROOFING, SIDING & TRIM

STANDARD METAL*

| | |
|------------|-----------------|
| RUSTIC RED | BURNISHED SLATE |
| CHARCOAL | HUNTER GREEN |
| BLACK | SILVER |

SPECIAL ORDER METAL*

+ \$45 (EXCLUDING METAL BUILDINGS)

| | | |
|-----------------|--------------|------------|
| BRILLIANT WHITE | ALAMO WHITE | ASH GRAY |
| LIGHT STONE | TAN | TAUPE |
| PEWTER GRAY | BROWN | BRITE RED |
| BURGUNDY | GALLERY BLUE | OCEAN BLUE |

SHINGLE ROOF*



METAL ADVANTAGES

- 29 Gauge high quality metal.
- **30 YEAR LIMITED WARRANTY**
All metal roofing and siding comes with a 30 year limited warranty against rust through.
- Match your home or existing building(s) or offer a nice contrast or focal point.
- Does not depend on foreign oil as a raw material.
- Metal is 100% recyclable & virtually worry-free.

SHINGLE ADVANTAGES

- Residential grade architectural shingles.
- 30 year limited warranty.
- Match your home or existing building(s).

YOU CHOOSE METAL OR SHINGLE ROOF

SAME PRICE ON ALL BUILDINGS
(STANDARD METAL COLORS)

URETHANE COLORS STAINED COLOR APPEARANCE*

| | |
|----------------|------------|
| CHESTNUT BROWN | HONEY GOLD |
| MAHOGANY | DRIFTWOOD |
| DARK EBONY | |

**10 YEAR GUARANTEE
AGAINST FADING**

PAINT COLORS SOLID COLOR APPEARANCE*

| | | |
|-------------|--------------|-------------|
| BARN WHITE | NAVAJO | BEIGE |
| CLAY | BUCKSKIN | BROWN |
| GRAY SHADOW | GAP GRAY | BLACK |
| EVERGREEN | PINNACLE RED | SCARLET RED |

*Actual colors may vary from those displayed in brochure. See dealer for actual color swatch.
OHB is not responsible for colors not matching the brochure.

FLOORING OPTIONS

- 4x6 Pressure treated skids are notched for floor joists which greatly increases strength and prevents twisting - **standard**
- 16 inch on center pressure treated floor joists - **standard**
- 12 inch on center pressure treated floor joists - **optional** (standard on garages)
- 2x4 Pressure treated floor joists - **standard**
- 2x6 Pressure treated floor joists - **optional** (standard on 14' and 16' wide buildings)

5/8" CDX grade square edge, Pressure treated plywood

- Lifetime warranty against termites & fungal decay
- Choose this flooring if you want a lifetime warranty against termites & fungal decay and are not as concerned with small imperfections and knots in the appearance or seam gaps due to shrinkage from the pressure treating process

3/4" Pressure treated plywood – optional

YOU CHOOSE: treated square edge or T&G - SAME PRICE

5/8" Tongue and Groove, Engineered Panels

- Exceptional strength and stiffness for a flatter, more stable floor
- Free of knots and patches with a thermally fused face
- Advanced resins are moisture resistant
- Choose this if you want a seamless floor with a virtually flawless appearance

3/4" Tongue and Groove, Engineered Panels – optional

Standard floor designed for 40 lb/sq. ft. **LIVE LOAD** and 200 lb/sq. ft. **POINT LOAD**. Additional options are available.
See dealer/website for more heavy duty options.



Engineer Certified buildings are certified for 30 psf Ground Snow Load and 105 mph winds (wind rating requires customer supplied anchors). Additional options are available – see dealer/website for more details. Standard set of engineered plans available with purchase of building upon request. Price does not include anchors, calculations or elevations. Extra charges apply for custom plans, calculations or elevations. Designed to meet IBC standards, not guaranteed for every local jurisdiction. Our buildings are classified as Minor Storage Facilities (Occupancy Category 1) and not intended for any other use. Economy style and Metal buildings are not certified as a standard. These can be built as certified for an additional charge.

ENGINEER
certified

STANDARD SIDING



5/8" T1-11 PRESSURE TREATED NO ADDITIONAL CHARGE

- 24" OC STUDS (DOUBLED UNDER SEAMS) & 24" OC TRUSSES (66% thicker siding easily spans 24" OC stud spacing, with doubled support under seams to equal the same amount of wood as in 16" OC spacing)
- PRESSURE TREATED and features a LIMITED LIFETIME WARRANTY against termites and fungal decay
- Tried and true PREMIUM grade REAL PLYWOOD SIDING
- 5/8" thick, 66% THICKER than many competing siding products
- Comes water sealed with 4 YEAR water sealer

AVAILABLE COATINGS: WATER SEALER (ONLY)



3/8" LP SMART PANEL NO ADDITIONAL CHARGE

- 16" OC STUDS / 24" OC TRUSSES / DOUBLE TOP STUD PLATE
- CUTTING EDGE TECHNOLOGY, engineered wood product that is WATER RESISTANT
- ZINC BORATE TREATED throughout to help resist fungal decay and termite damage
- Comes with a 50 YEAR LIMITED WARRANTY

AVAILABLE COATINGS: PAINT & URETHANE (ONLY)

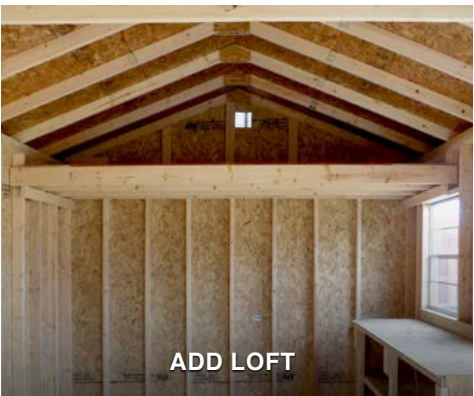
OPTIONAL SIDING



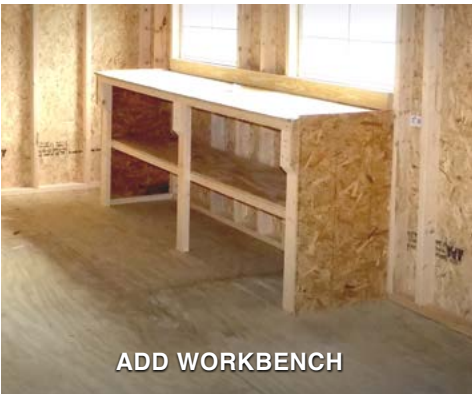
LP DUTCH LAP 15% ADDITIONAL CHARGE

- 16" OC STUDS / 24" OC TRUSSES / DOUBLE TOP STUD PLATE
- CUTTING EDGE TECHNOLOGY, engineered wood product that is WATER RESISTANT
- ZINC BORATE TREATED throughout to help resist fungal decay and termite damage
- OPTIONAL HOUSE WRAP can be installed between OSB sheathing and lap siding
- 2 LAYER SIDING SYSTEM. Lap siding is installed over OSB sheathing, same as in home construction
- Comes with a 50 YEAR LIMITED WARRANTY

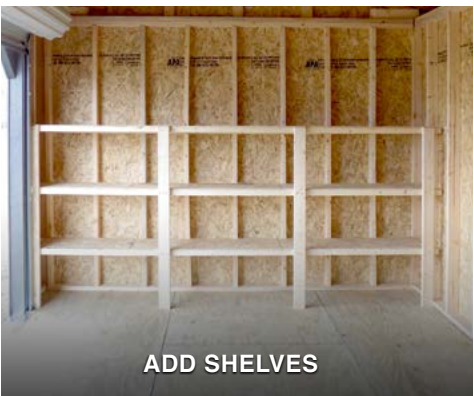
AVAILABLE COATINGS: PAINT & URETHANE (ONLY)



ADD LOFT



ADD WORKBENCH



ADD SHELVES

| | |
|--|--------------------------|
| LOFT WINDOW (24" x 27") (IN LOFT ONLY) | \$75 |
| 2' x 3' WINDOW | \$75 |
| 2' x 3' DOUBLE PANE WINDOW | \$175 |
| 3' x 3' WINDOW | \$85 |
| 10" x 29" WINDOW | \$70 |
| 10" x 35" WINDOW | \$85 |
| SHUTTER TRIM | \$45 PER WINDOW |
| HOUSE - STYLE DOOR, NO WINDOW (OPENS IN & TO THE RIGHT) | \$260 |
| HOUSE - STYLE DOOR, 9 LITE WINDOW (OPENS IN & TO THE RIGHT) | \$320 |
| SINGLE 3' WOODEN BARN DOOR | \$60 |
| SINGLE 4' WOODEN BARN DOOR | \$80 |
| DOUBLE WOODEN BARN DOORS | \$120 |
| GARAGE DOOR (9'x7') (WALL MUST BE AT LEAST 12' WIDE x 8' TALL) (12' ON CENTER FLOOR JOISTS INCLUDED) | \$525 |
| 3/4" FLOORING (PRICED PER SQUARE FOOT) | \$.40/sq ft |
| 2x6 FLOOR JOISTS (STANDARD ON 14' & 16' WIDE BUILDINGS) | \$.30/sq ft |
| 12" ON CENTER FLOOR JOISTS (STANDARD ON GARAGES) | \$.30/sq ft |
| 7 FOOT TALL WALLS (81" INSIDE) (UTILITIES) | \$125 |
| 8 FOOT TALL WALLS (92" INSIDE) (UTILITIES) | \$125 |
| SHELVES (3 TIER) (PRICED PER FOOT OF WIDTH) | \$10/ft |
| WORKBENCH (PRICED PER FOOT OF WIDTH) | \$12/ft |
| LOFT (PRICED PER FOOT OF DEPTH) | \$20/ft |
| OPENING LOFT DOOR (LOFTED BARNS ONLY) | \$45 |
| SPECIAL ORDER METAL ROOF COLOR (EXCLUDING METAL BUILDINGS) | \$45 |
| PAINT (ONE COLOR) | FREE |
| URETHANE UPGRADE (8' & 10' WIDE BUILDINGS) (ONE COLOR) | \$100 |
| URETHANE UPGRADE (12', 14' & 16' WIDE BUILDINGS) (ONE COLOR) | \$200 |
| PAINTED BUILDING TRIM (SECOND COLOR / PAINT ONLY) | \$50 |
| EACH ADDITIONAL COLOR (PAINT OR URETHANE) (INCLUDES DOORS, TRIM ON DOORS & SHUTTERS) | \$50 |
| 16" ON CENTER STUDS AND TRUSSES (TREATED ONLY) | \$.70 /sq ft |
| 16" ON CENTER TRUSSES (PAINTED ONLY) | \$.30 /sq ft |
| PORCH RAILING | \$12/ft |
| EXTRA PORCH POST | \$35/each |
| HOUSE WRAP (ON WALLS ONLY) | \$1 ²⁵ /sq ft |
| TAR PAPER (UNDER ROOFING ONLY) | \$1 ²⁵ /sq ft |
| TECH SHIELD (ON ROOF ONLY) | +2% ADDITIONAL CHARGE |
| TECH SHIELD (ON WALLS ONLY) | +3% ADDITIONAL CHARGE |
| 6" FRONT & BACK ROOF OVERHANG (GABLE END WALLS) | \$200 |
| 7/12 PITCH (6' & 7' WALLS ONLY) (UTILITY ONLY) (8', 10' & 12' WIDE ONLY) | \$200 |
| LP DUTCH LAP SIDING (SEE PAGE 11) | +15% ADDITIONAL CHARGE |



QUICK, FREE DELIVERY & EASY SETUP WITHIN 30 MILES

We will provide you with a quick and efficient delivery experience. Delivery site must be accessible with a truck and trailer.

NO SITE PREPARATION NECESSARY if site is accessible with truck and trailer and site is **NO MORE THAN 3 FEET OUT OF LEVEL. FREE SETUP** includes leveling with customer supplied concrete blocks and driver supplied pressure treated shims. Drivers can supply concrete blocks for \$2.50 each. **FIRST 30 MILES FREE.** Over 30 miles subject to additional charge.

JUST PAY THE FIRST MONTH'S RENT & SECURITY DEPOSIT & WE DELIVER & SET UP! IT'S THAT EASY!

• BUILDINGS AT THE SALES LOT:

Can **USUALLY** be delivered within 5-7 days. [WEATHER PERMITTING]

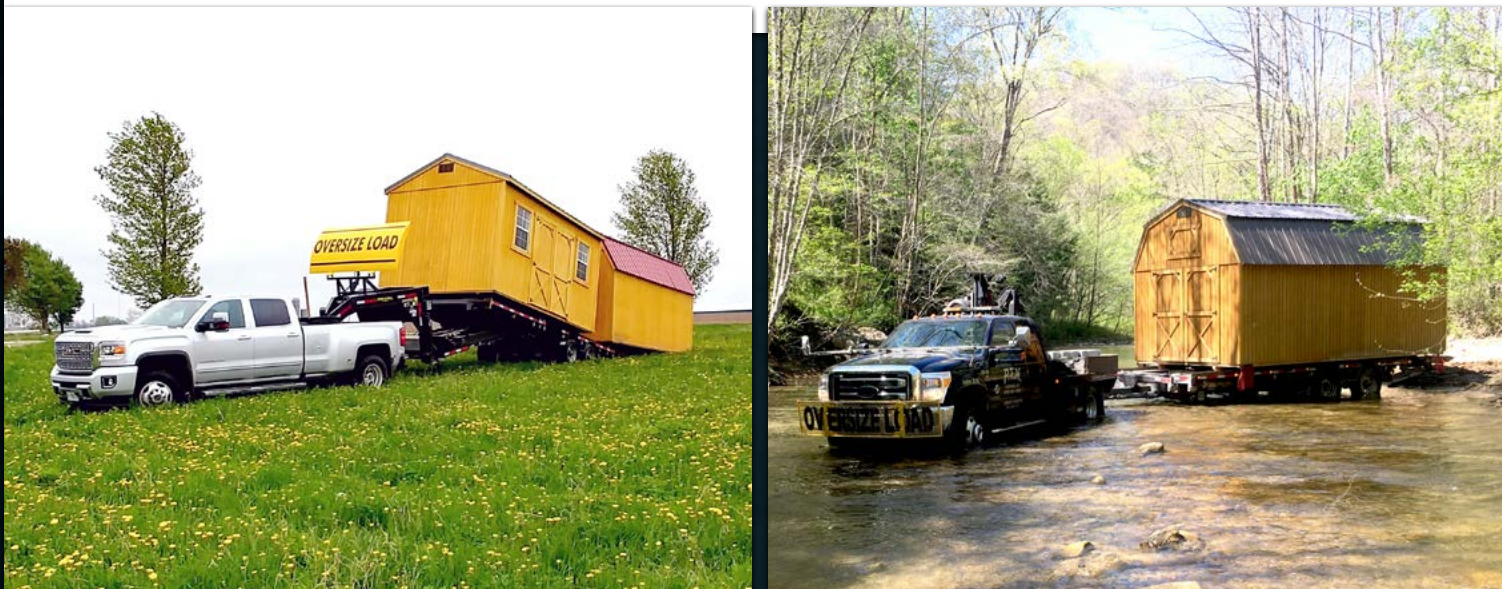
• ORDERED TREATED BUILDINGS:

Can **USUALLY** be delivered within 10-15 days. [WEATHER PERMITTING]

• ORDERED URETHANE, PAINTED & METAL BUILDINGS:

Can **USUALLY** be delivered within 15-20 days. [WEATHER PERMITTING]

NOTE: Non-standard metal colors on any building will add one week to the lead time. Peak season and poor weather conditions can add extra days on to the normal delivery time. Lead times vary; above delivery times do not apply to build on site buildings.



BUILD ON SITE

Old Hickory Buildings offers a build-on-site program for those situations where delivery is not an option or a customer wants a customized solution. See your dealer for more information. Old Hickory Buildings cannot paint, urethane or water seal on-site buildings. Paint/Urethane/Water Sealer not included in price.

• BUILD ON SITE BUILDINGS:

Can **USUALLY** be built on site within 2-6 weeks. [WEATHER PERMITTING]

NOTE: Lead times vary | Not available in all areas



RENT TO OWN

Our low monthly rental rates are comparable to mini-warehousing rates. Our no strings attached plan allows you to have your own storage facility at your home or business, when and where you need it.

Just pay a small security deposit plus your first month's rent and we'll set up your building at your location.

SECURITY DEPOSITS*

- \$100 on 8' & 10' wide buildings
- \$200 on 12' wide buildings
- \$1,000 on 14' wide buildings
- \$1,500 on 16' wide buildings

*Does not apply to Animal Shelter or Cabana. See page 7 for details.

NO STRINGS ATTACHED

The rental agreement is on a month to month basis, meaning you have the flexibility to turn in the building at any time for any reason.

SEE DEALER FOR DETAILS.

EARLY PAYOFF

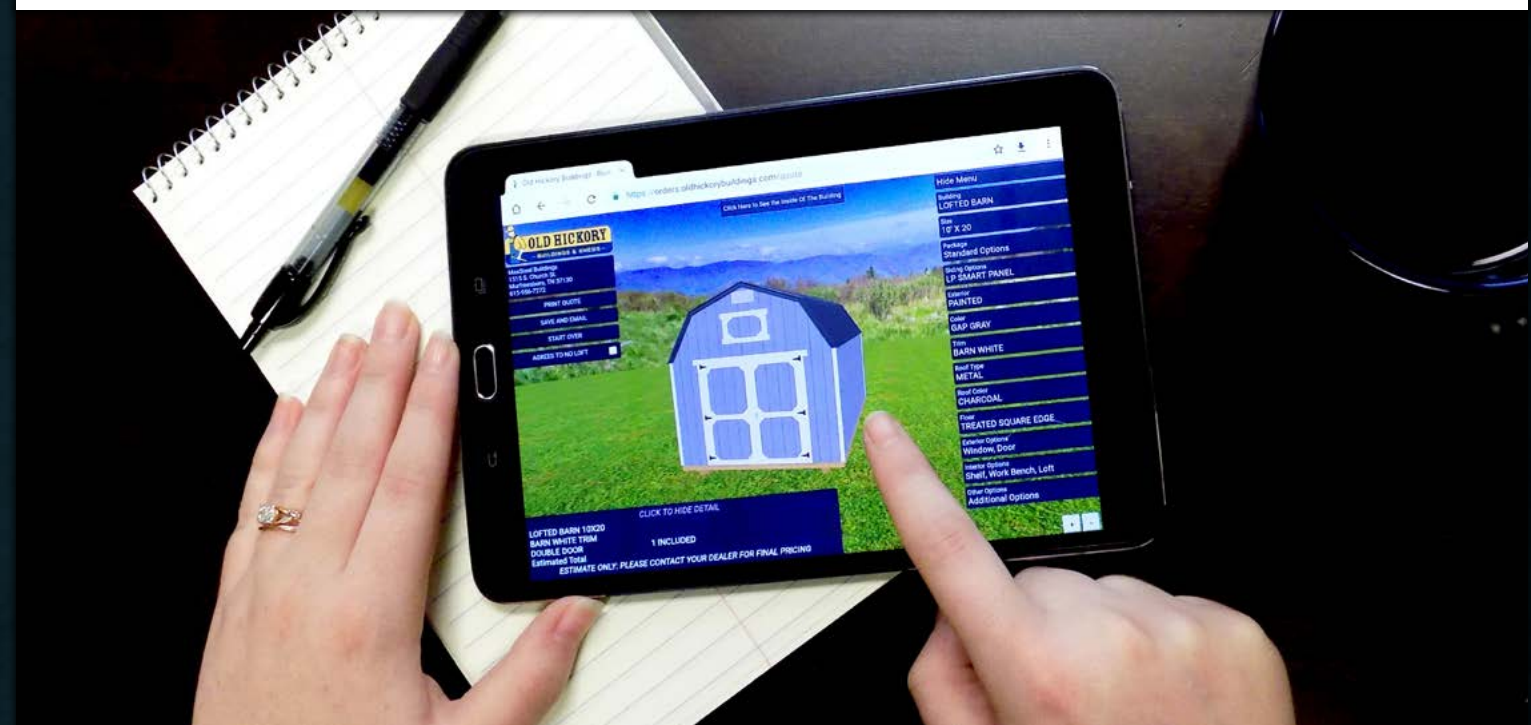
Payoff anytime with no penalty. There is also a discount off the rental balance for those who pay off early.

If you decide to pay off the building within 90 days, we'll waive the entire cost of lease services.



BUILD & PRICE

Visit **OLDHICKORYBUILDINGS.COM** to design and customize your own building



WARRANTY & GUARANTEE

LOW PRICE GUARANTEE

We'll match any competitor's advertised price for same quality building. Competitor's building must have identical materials as Old Hickory Buildings. See dealer for details.

LIMITED LIFETIME WARRANTY

Against termite damage and fungal decay on all pressure treated wood, including pressure treated skids, floor joists (on all models), optional pressure treated flooring and optional pressure treated 5/8" T1-11 siding.

30 YEAR LIMITED WARRANTY ON METAL

All metal roofing and siding comes with a 30 year limited warranty against rust through.

FIVE YEAR LIMITED WARRANTY

We offer you peace of mind – with a limited 5 year warranty backed by a company that has been in business since 1997, you can trust that Old Hickory will be there if you need them, and with our warranty written, there will be no surprises in the rare event of a claim.

50 YEAR MANUFACTURER'S WARRANTY

For LP Dutch Lap Siding & LP Smart Panel Siding.

Follow the link provided for more information:

<http://lpcorp.com/media/1419/lp-smartside-warranty-english.pdf>

**SEE OUR WEBSITE OLDHICKORYBUILDINGS.COM
FOR SPECIAL PRICING ON SELECT BUILDINGS**



A COMPANY YOU CAN TRUST

Old Hickory Buildings has over 700 locations in North America and is fully insured. We have been in business since 1997 and carry Liability Insurance and Worker's Compensation so you don't have to worry. Old Hickory Buildings is a name you can trust.

OLDHICKORYBUILDINGS.COM



Old Hickory Buildings, LLC and its associates are not responsible for permits, snow/wind load requirements, covenant searches, restrictions, setbacks, yard damage, or underground damage. Customer is responsible for compliance with any such requirements. Free setup includes leveling the building starting with one corner at ground level and raising it up to a maximum of 3 feet. If leveling requires 1 foot or less, pressure treated wood may be used. Otherwise, customer may supply concrete blocks which are placed on top of the ground, or we can supply concrete blocks for \$2.50 each. In very rare cases, underground footers may be required by local building codes. Old Hickory Buildings does not offer digging or footer services and these are not included in free set up, however we can work with customer or contractor when required for an additional cost. Please contact your local Building Inspector and/or Homeowner's Association for information on requirements and restrictions. It is the customer's responsibility to decide if ground conditions are unsuitable for delivery. Free Delivery covers one trip up to 30 miles one way. Trips over 30 miles are subject to a \$2/mile (8ft, 9ft & 10ft wide) or \$3.50/mile (12ft & 14ft wide) or \$4.50/mile (16ft wide) charge one way. The customer will be responsible for the mileage charge as well as the cost of any additional trips. Old Hickory has the right to refuse any sale prior to the time when it is accepted and approved by Old Hickory's corporate office and the building is set up at customer's location.

ALL PRICES SUBJECT TO CHANGE.

4.3.19 -- (OHB_OH-3295) Old Hickory Buildings, LLC ©Copyright 2019 All rights reserved

OH

v10.0